

HOUSE 1

assignment: building design, residencial / commercial **location:** Tirana, Albania
area: 14.490 sqm **client:** Halili sh.p.k. **year:** 2005, 2006 **completion:** 2009
design team: Anne Niehüser, Christian Moore, Martin Sobota, Nina Reckeweg,
Oliver Seidel **cooperation:** gruppeomp+g; **landscape:** Uli Centmayer & Martin
Arfalk, Christian Zöllner

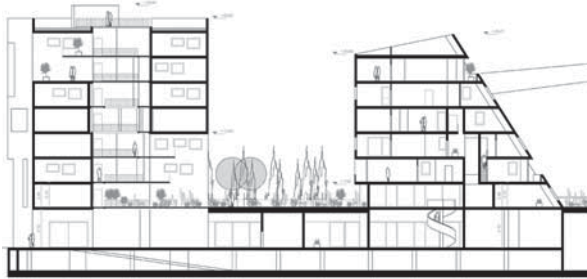
House 1 is the first built project of the masterplan 'mirror twins'. On top of a shared commercial ground floor a green link connects the site with the close-by park. The two separate buildings connected by the common plinth are generating an enormous amount of requested square meters. Rather massive volumes are perforated by a series of programmatic voids that connect to a common circulation space, an inner void. The much needed public space is integrated into the building by creating a second entry level and reinterpreting the circulation space. The engraving appearance of House 1 refers to the typical salient facades of Tirana. Multiple tilted strips create a rich play of light and shadow.



House 1 in the new quarter "Mirror Twins"



House 1 and its heterogeneous environment



Section



Floorplan standard level



Apartment



Central staircase with atrium



monochrome relief of the facade