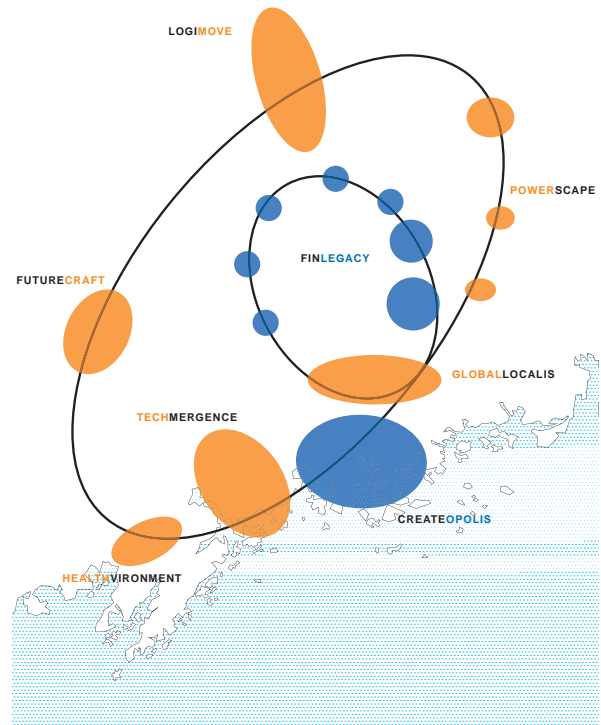


Greater Helsinki Vision - eight profiles, one unity

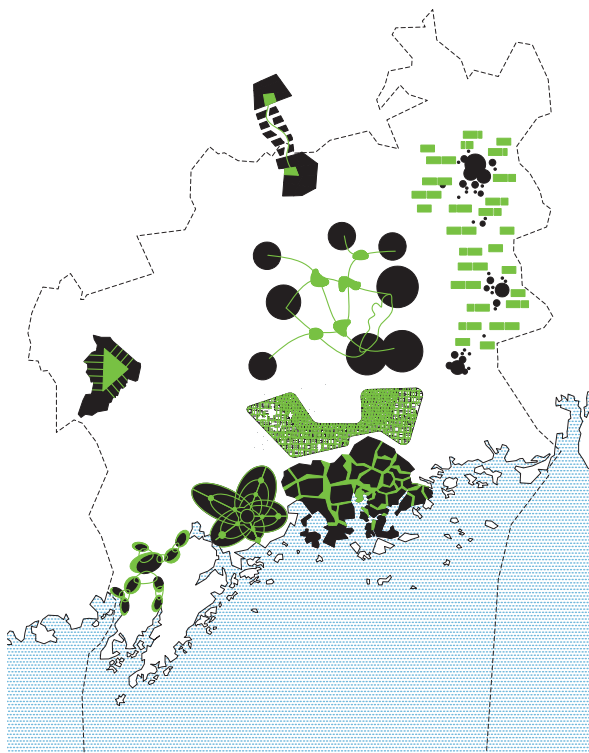
international competition development concept for greater Helsinki 2050
year 2007 location Helsinki, Finland client City of Helsinki project team Oliver Seidel, Verena Brehm award 2nd prize

'Holistic Uniqueness' proposes a future vision and a robust development framework for Greater Helsinki, Finland. The region is globally positioned as the interface between the EU and Russia. A high velocity train network links Helsinki to the Baltic centres, Stockholm, Tallinn and St. Petersburg, establishing a transnational connection. The Greater Helsinki Region itself is defined as a configuration of eight core areas, each characterised by a unique programmatic and spatial profile. Based on the incorporation of global future developments (like energy shortage, demographic change etc.) and existing local potentials, the profiles act as concepts for a sustainable development - ensuring global competence and creating local identity at the same time. A specific urban form and structure is proposed for each area, strengthening the programmatic profile and creating diverse relations between urban and green spaces. Within this metropolitan configuration each area will offer something unique. Therefore they are linked not only by a sophisticated transport system, but more importantly by a complementation of each other.

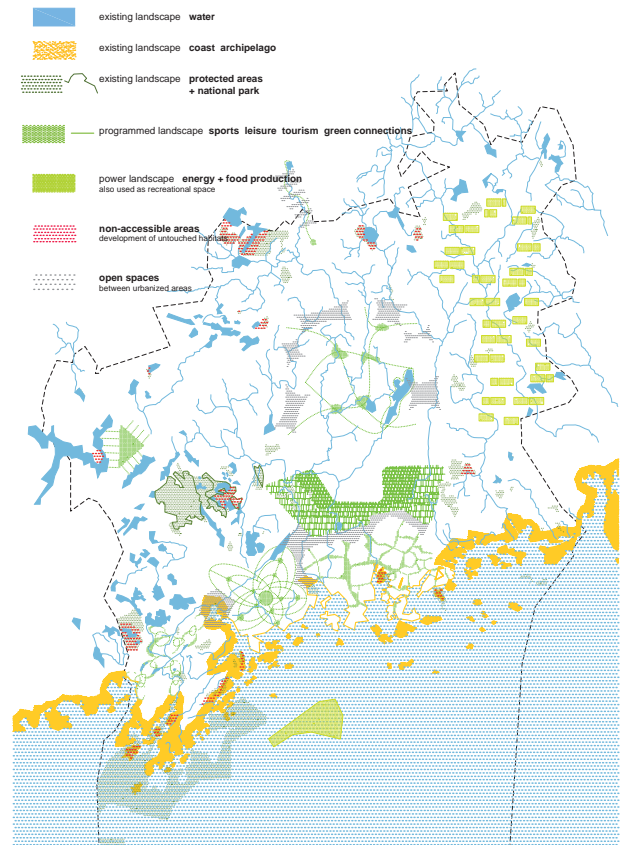
cityförster
architecture + urbanism



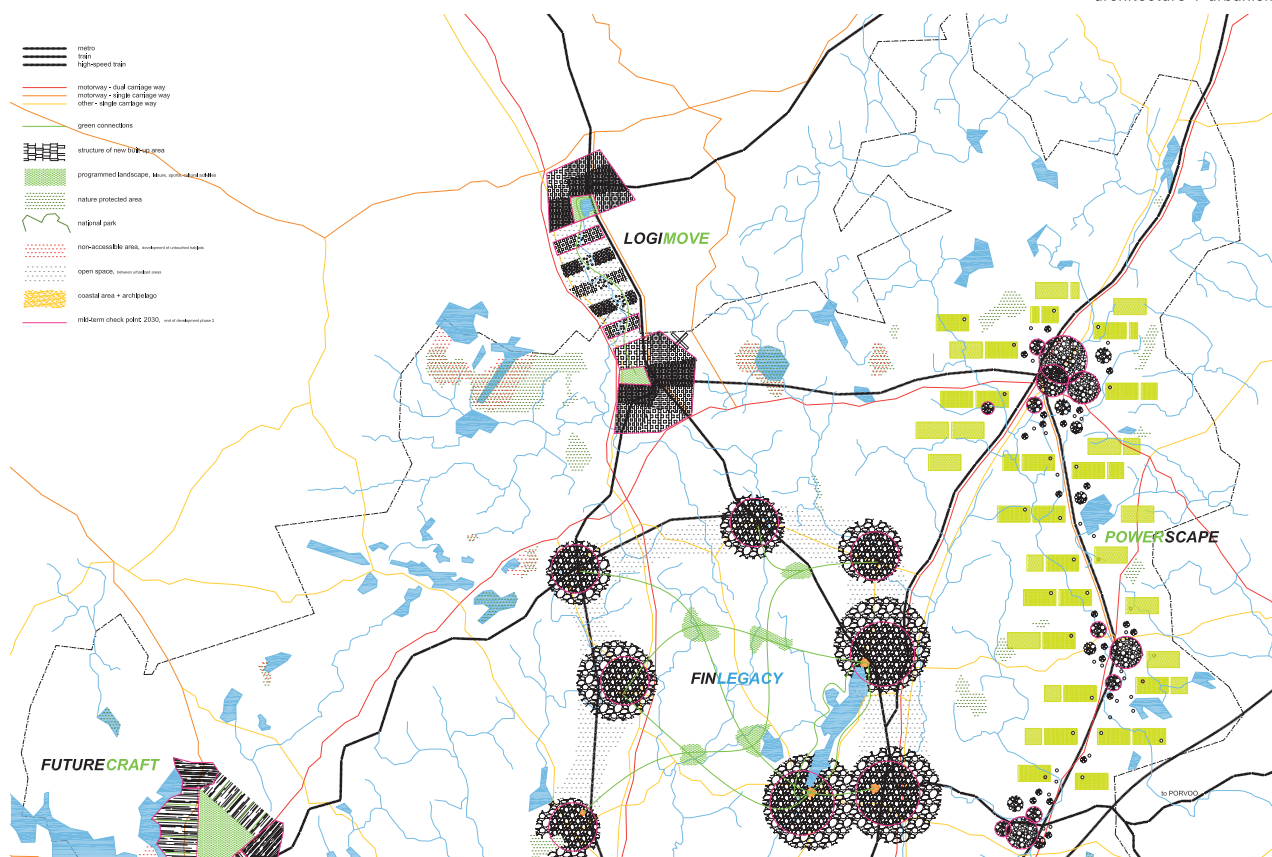
Global competence local identity



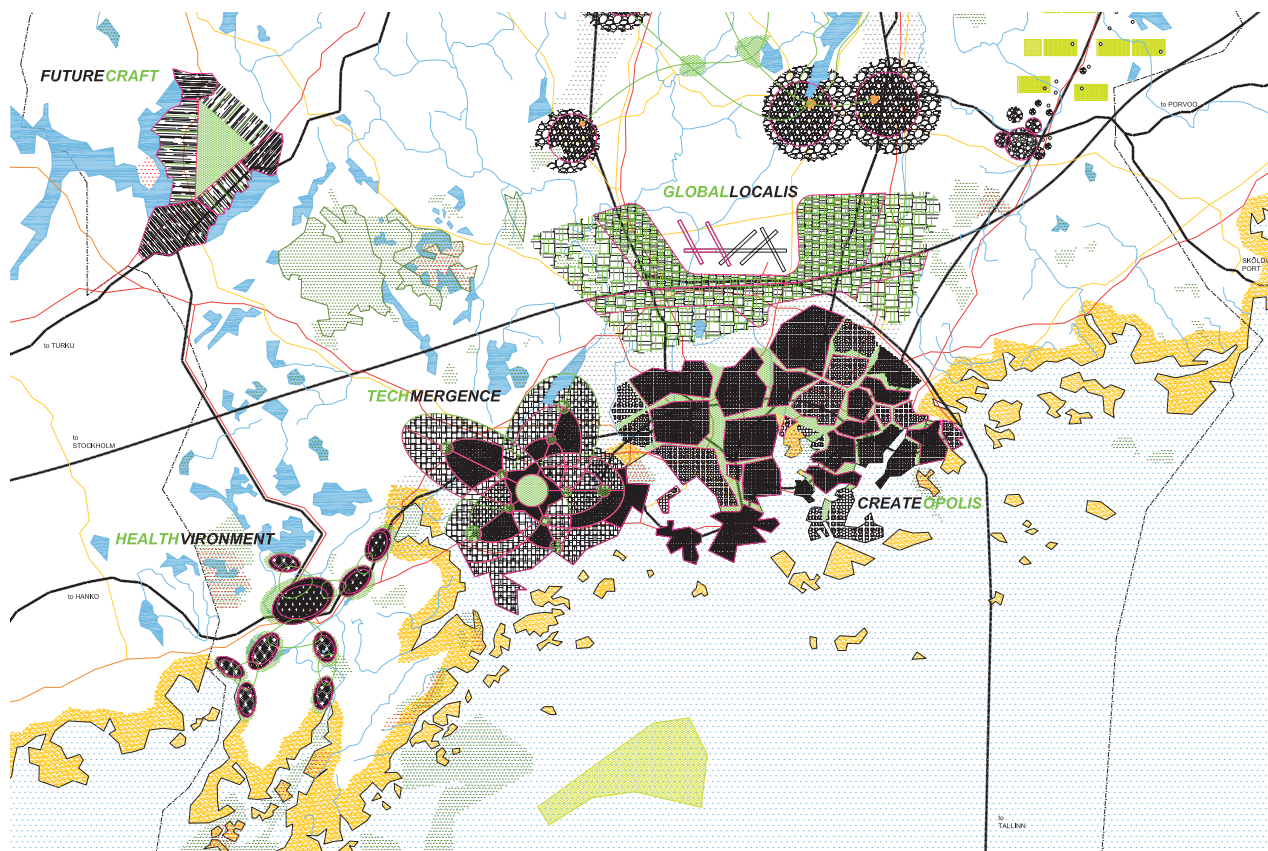
Relation urban spaces - landscape



Megatrends



Regional plan 2050, northern part



Regional plan 2050, southern part