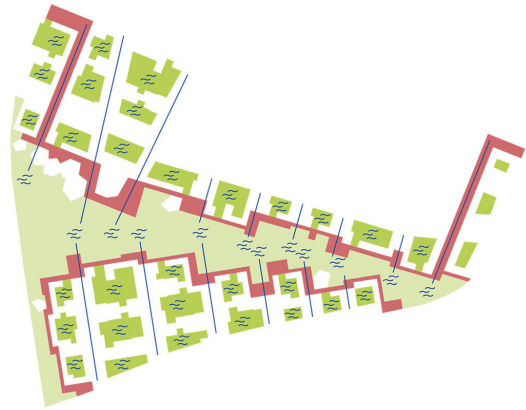


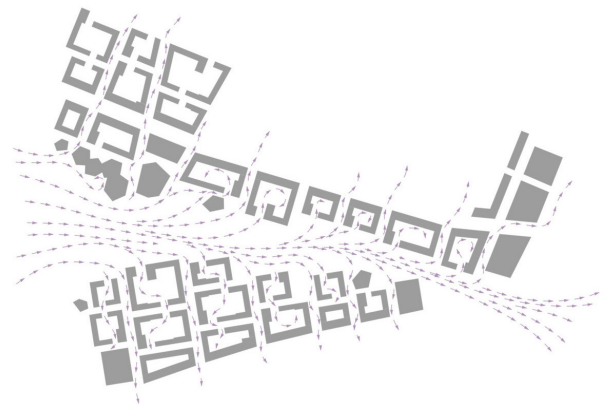
## Open Wild Tegel

**open competition** integrated urban district "Kurt-Schumacher Quarter"  
**location** Berlin, Germany **size** approx. 48 ha **client** Federal State of Berlin, Tegel Projekt GmbH **services** masterplan **status** completed 2016  
**partners** Verena Brehm, Oliver Seidel **team** Tim Mohr, Felix Rebers, Lisa Iglseder **cooperation** man made land landscape architects, Transsolar Energietechnik GmbH, SHP Ingenieure **award** recognition

The impressive wide heath landscape of Tegel forms the identity-creating heart of the new district. It is "wide, open, wild and free". This landscape is shaped by a vivid seam, that maximizes the contact surface to the landscape. Schools, kindergardens and public squares activate this space. Here one can play, learn, rest and socialize. A variety of building typologies characterizes the district and offers a great diversity of programs. Residential buildings increase towards the seam, while offices and retail are more likely to be found at the well accessible edges. In Tegel one can find bigger and smaller buildings with panoramic views or gardens, intimacy or openness.



Heather | Seam | Courtyards

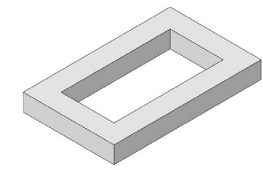


Fresh air distribution

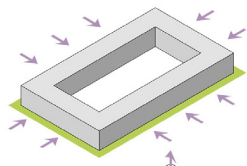


Site plan

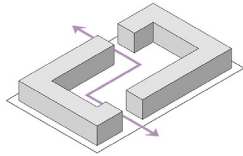




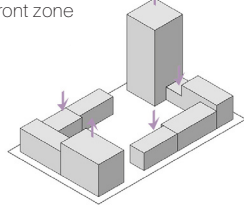
Construction site suitable for city block



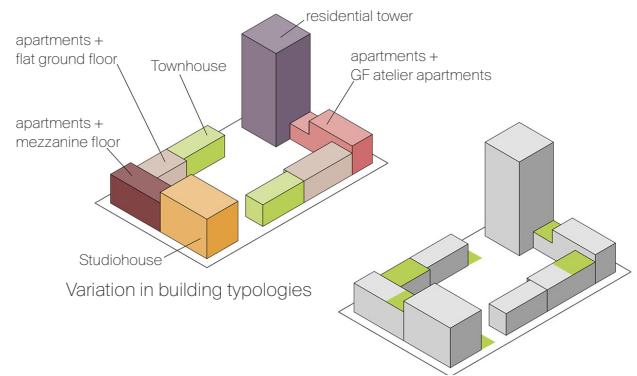
Front zone



Opening + Passage



Height differentiation



Roof gardens and playgrounds  
Typology mix



Plaza at the southern seam with residential street



Mixed housing types



View from the northern seam towards south-west