

Green Wave. Glitnir Bank Hq

international competition masterplan Kirkjusandur and new headquarters for Glitnir Bank **location** Reykjavik, Iceland **size** 5.5ha masterplan, 14.500m² GFA offices **client** Glitnir Bank hf. & Association of Icelandic Architects **year** 2006/07 **project team** Anne Niehüser, Oliver Seidel, Verena Brehm **cooperation** Hargus Climate Engineering **award** 2. prize

The design concept 'Green Wave' generates a holistic image and a characteristic coastal skyline for the site of Kirkjusandur in Reykjavik, Iceland. Two design principles characterize the appearance of all buildings: The dynamic shape of the wave as an aesthetic concept and the integration of green spaces as vital elements of functional and atmospheric quality. The new headquarters of Glitnir Bank, a nine-storey building addressing the prominent highway Sæbraut, will be the key figure for the future development. The elevated entrance plaza is secluded from public flow on ground level and sheltered from heavy winds coming from the shore. Open working spaces can be organised and subdivided flexibly. Winter gardens on each floor increase internal lighting, provide space for informal communication and create a comfortable atmosphere and climate. A decentralized ventilation system and a heating system based on geothermal energy are implemented, which are economic in maintenance, space-saving and highly energy efficient. The façade consists of tilted glass elements creating a "deep skin" that reflects natural and artificial light in different angles.



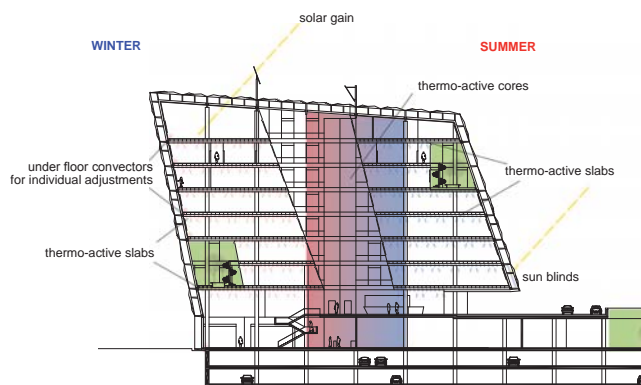
night view: headquarters addressing the prominent highway Sæbraut



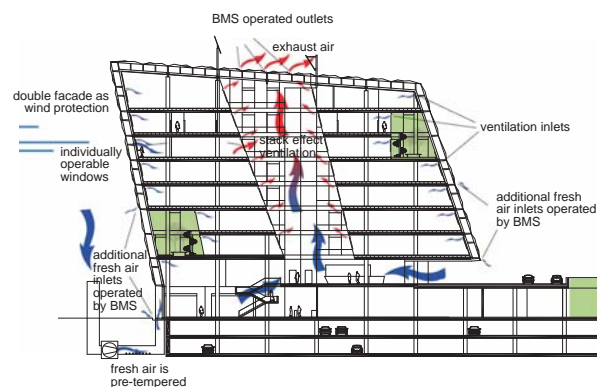
Green spaces create a comfortable working atmosphere



Skyline



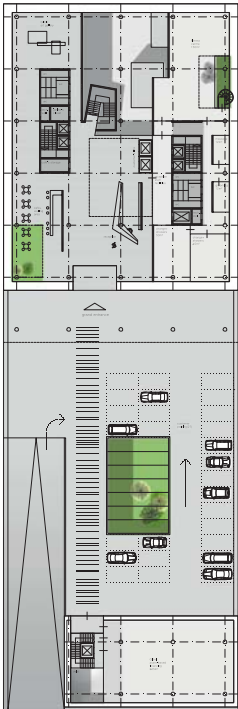
Heating + cooling system



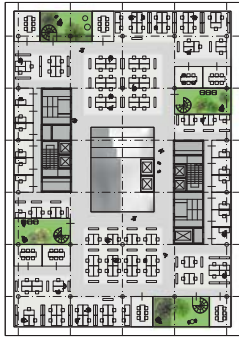
Ventilation system



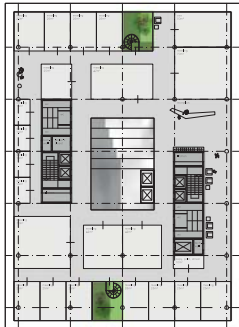
Site plan: Building structure orientated towards the shore



Level 02 entry



Level 08



Level 06

Floorplans levels 02, 08 and 06



North elevation: tilted glass elements create a "deep skin"



Foyer opening up to the central atrium with a view to the shore