

RACECOURSE FOR FUTURE

NATURE AND LEISURE IN THE EAST OF BREMEN

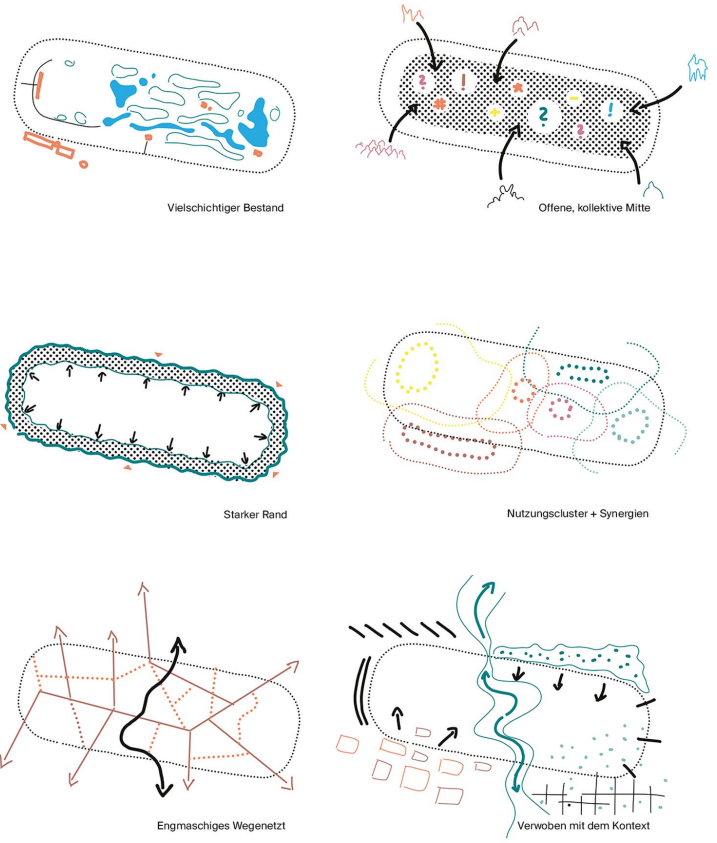
assignment Cooperative workshop procedure for the re-use of a former racecourse **location** Bremen, Germany **size** 30ha **client** Free Hanseatic City of Bremen **services** landscape and urban design **status** idea, 2022 **team** Verena Brehm, Tim Kohne **cooperation** NSP **award** 2nd prize

How can the area of the former racecourse in the east of Bremen be used as a local recreation area for all citizens of Bremen that, in addition to providing important ecosystem services, continues to allow space for experimentation and the unexpected?

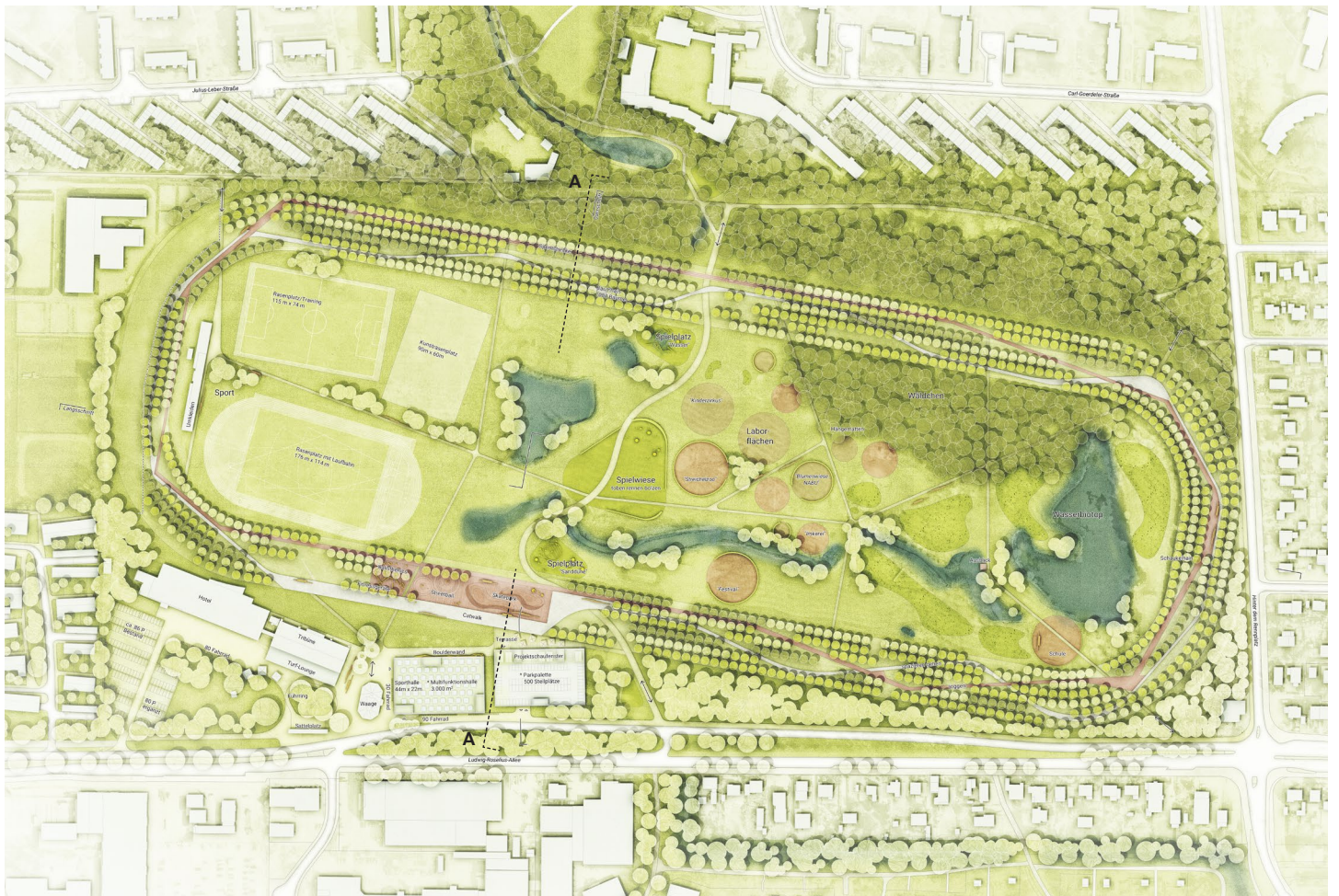
The racetrack oval becomes a continuous green ring that leads through the different areas. The outer edge is the most precisely formulated in terms of landscape design and the most regulated in terms of operation. It functions as a perceptible spatial framework and as a clear threshold between inside and outside. In addition, two circular paths provide the overarching connectivity here. The openness of the racecourse center is preserved and staged. It remains open for dynamic changes and is a valuable property that has to be negotiated continuously. Sub-areas are characterized in a variety of ways and occupied by different clusters of use. Individual utilization modules profit from the spatial proximity to each other and can form synergies. The central connecting path is supplemented by a network of secondary footpaths and trails. It runs through the different areas of use of the park and enables a direct and intuitive passage through the area.

The project showcase building at the entrance to the area serves as a hub for networking local actors and sees itself as an open start-up center where new ideas and impulses for the racecourse area are continuously generated.

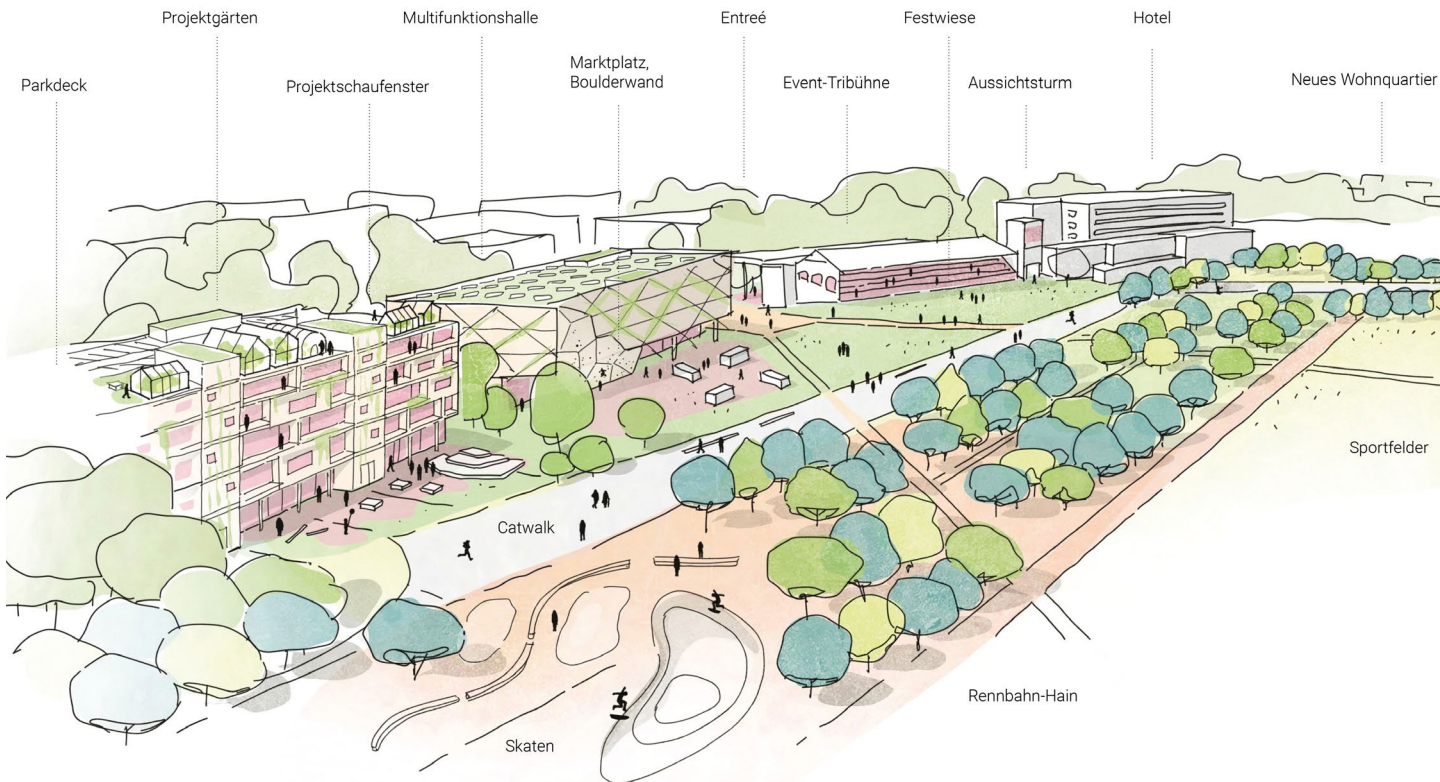
The concept preserves and further develops existing landscape and utilization structures. It avoids deconstruction and adds new layers to the site - structurally, functionally, and ecologically.



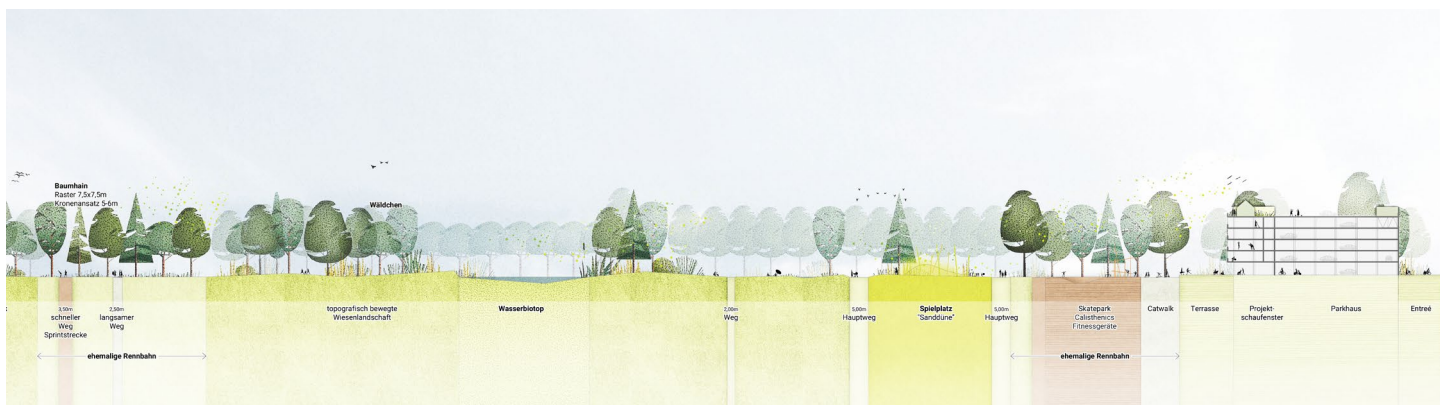
Design principles



Masterplan



View of the cultural cluster at the entrance to the area



Terrain section A-A



Climate grove on the former racetrack oval. 1000 new trees mark the outer edge of the area