

PRODUKTIVE INTERPLAY

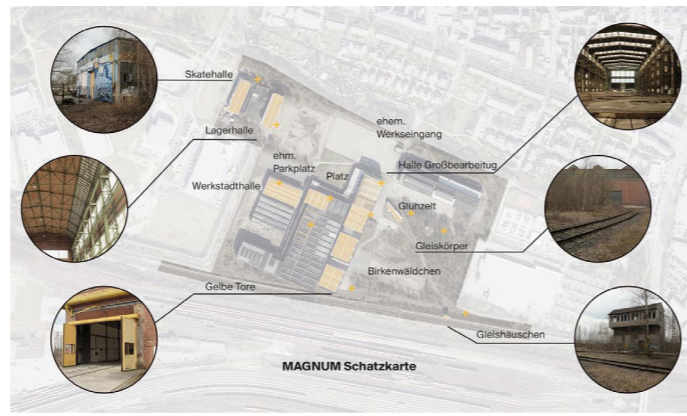
MAGNUM AREAL OSNABRÜCK

assignment Planning of an urban quarter on the site of a former steelworks **location** Osnabrück **size** 15,5 ha **client**GMH Real Estate Bessemerstraße GmbH **services** integrated urban and open space planning and concept **status** idea, 2023 **team** Oliver Seidel, Jacob Fielers, Imke Hullmann, Lukas Hegele **cooperation** urbanegestalt **award** 2. price

The Magnum site's DNA of industrial heritage and landscape succession forms the starting point for the transformation into a climate resilient neighborhood. The unique character of the former steelworks is expressed spatially in the overlapping of the scales of human, machine and nature and of the atmospheres between narrow alleys and wide squares.

This productive interplay continues to write the history of the Magnum site in constant change. Three subspaces (water courtyards, forest campus, factory cluster) derive from the site, each with its own independent profile, which form synergies with each other and with the neighborhood. The Magnum Mile connects the three subspaces as a lively backbone of the quarter and the adjacent urban spaces to the west and east.

For the quarter, own systems for the handling of water and soil are developed. They will be used for irrigation, gray water utilization and cooling of the quarter. The goal is to minimize erosion and soil exchange. As much accumulating water as possible is to be collected, filtered and reused. To do this, it will be stored in building-integrated cisterns. Materials collected are reused as much as possible. Existing structures, such as the grove or also hall structures are integrated and the character of the open space and the building structures are developed. The transformation is designed as a gradual, learning and appreciative process.



Maßstäbe (räumlich)
Human scale + Machine Scale + Nature Scale

Vielschichtigkeit (zeitlich)
Industrielles Erbe + landschaftliche Sukzession

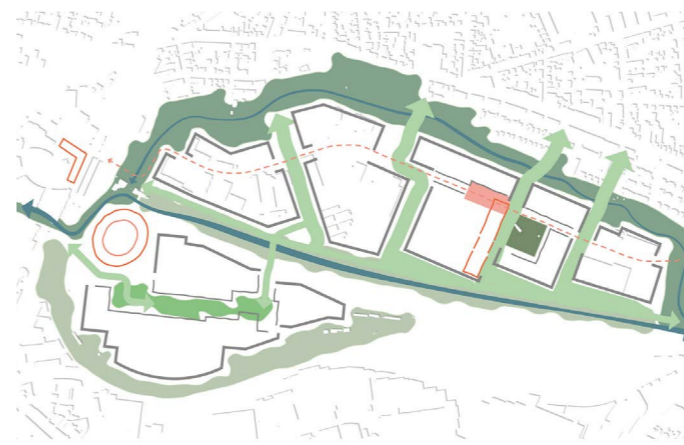
Atmosphären (emotional)
enge Gassen + weite Freiflächen

MAGNUM DNA: Identity-creating spaces, materials and open spaces as a starting point for transformation

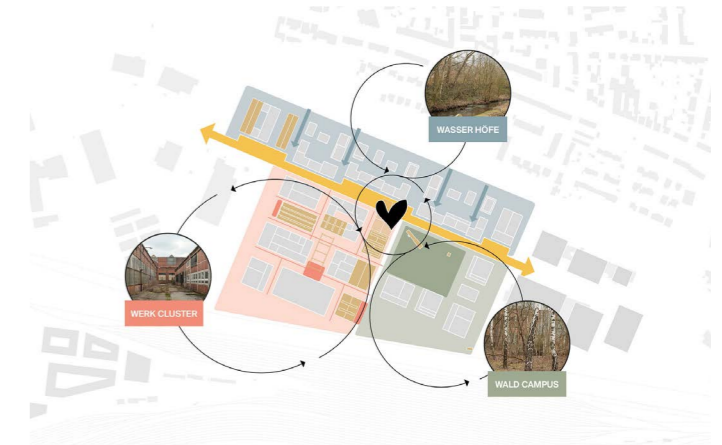


Industrielles Erbe Landschaftliche Sukzession Resilientes, zukunftsfähiges Stadtquartier

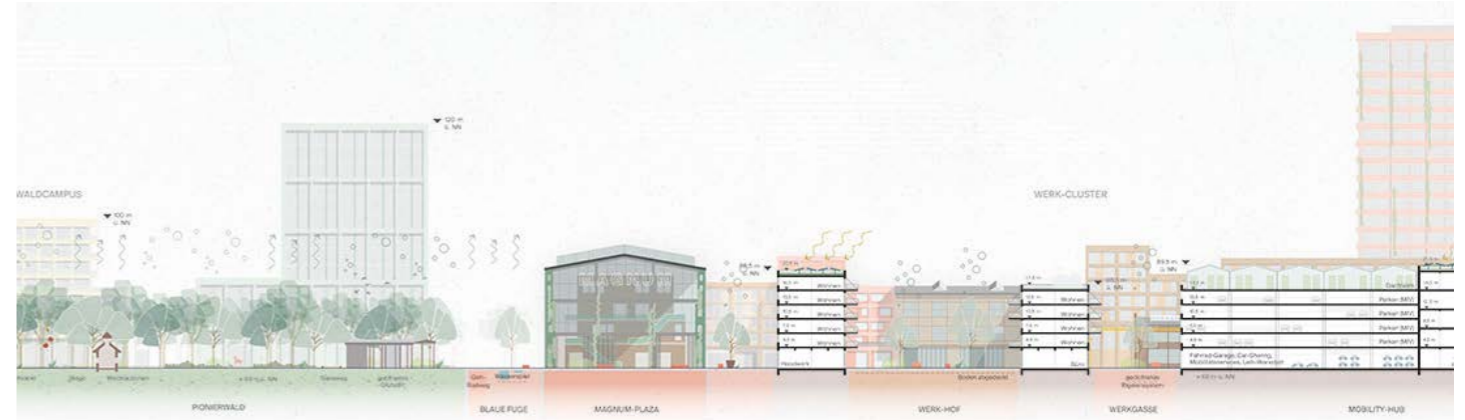
Magnum Palimpsest: Superimposition of existing traces and research of local history



A strong open space network forms the structural basis and integrates the area into the superordinate developments east of the city center.



Three subspaces with their own profile, circular and mixed-use create synergies with the surrounding area.



Magnum Mile as interface and lively neighborhood axis



View from Magnum Plaza towards the pioneer forest



urban design