

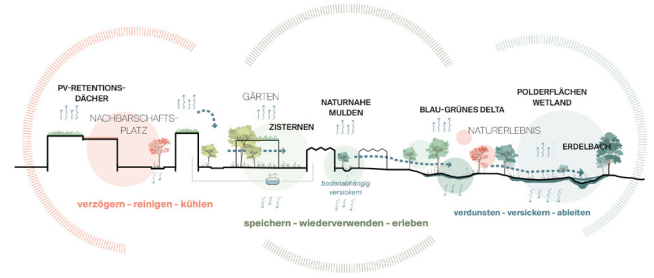
MÜNSTER-HILTRUP OST

BLUE-GREEN NEIGHBOURHOODS

assignment Urban and open space planning competition **location** Münster **size** 22,7 ha **client** city of münster **services** Urban planning design **status** idea, 2023 **team** Oliver Seidel, Jacob Fielers, Lydia Oehlwein, Lena Lauer mann, Lisa Igl seder **cooperation** nsp land-schaftsarchitekten stadtplaner, iwth GmbH **award** 2. Prize

The design taps into the potential to create a green, climate-adapted and car-free district for Münster Hiltrup that blends harmoniously into the existing landscape and settlement structure. Four compact neighborhoods with a large contact area to the open space will be linked by diverse green corridors in the interior (Green Delta) as well as a close-knit network of cycle paths and foot-paths and attractively connected to the outside. Motorized traffic is reduced to a minimum and parking spaces are bundled. Within the neighborhoods, the mobility hubs form everyday hubs. A small-scale, differentiated development structure with ground floor uses at the neighborhood squares, social functions and various, mixed typologies suggest a people-centered scale with a rural character. In conjunction with an innovative climate adaptation concept and high ecological and energy standards, a future-oriented neighborhood development is being created for Hiltrup.

Rainwater management follows the principle of the sponge city with the aim of minimizing intervention in the natural water balance, achieving near-natural rainfall-runoff behaviour, ensuring sufficient purification of the surface runoff that occurs, preventing flooding in the settlement area and reducing the runoff peaks into the watercourses to a natural level. Implementation is carried out as far as possible using near-natural methods with a small proportion of technical structures. In addition to the purely water management aspects, ecological benefits such as increased biodiversity and heat reduction are achieved. At the same time, blue-green structures are created that allow residents to experience the element of water.



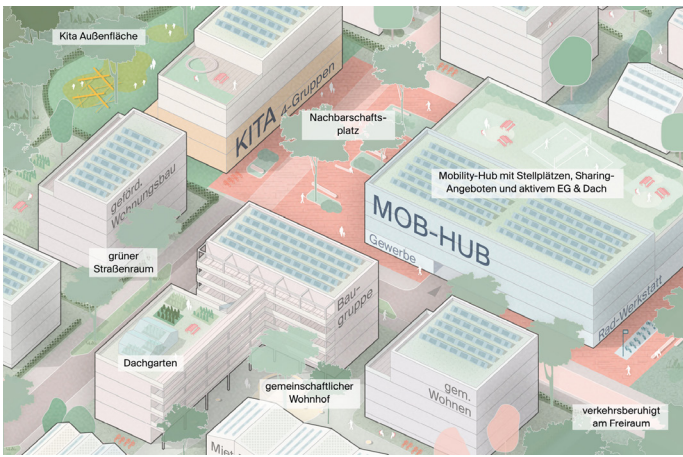
blue-green infrastructure



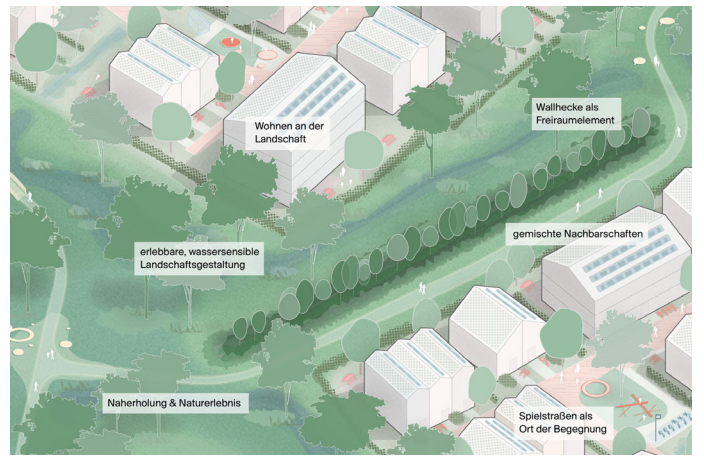
Framework plan



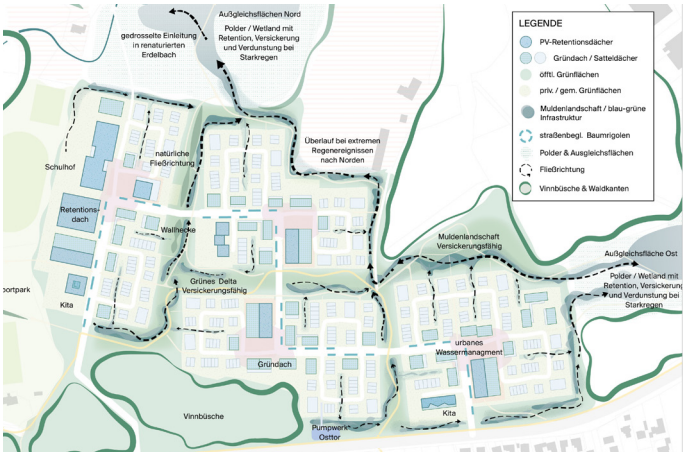
View through the central open space in the green delta



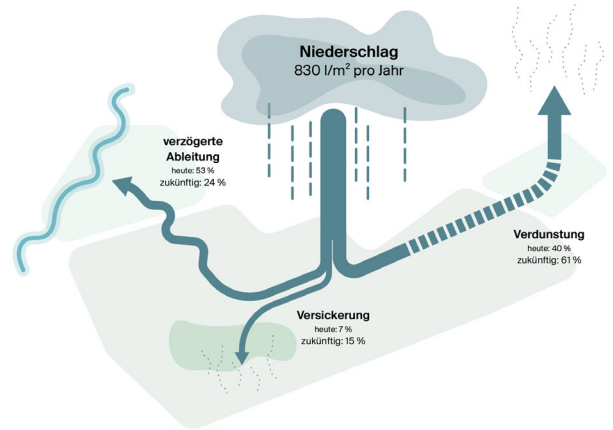
Neighborhood square with mobility hub and communal uses



Residential diversity in the blue-green landscape



Drainage concept



Precipitation balance



Masterplan