

CLIMATE QUARTER

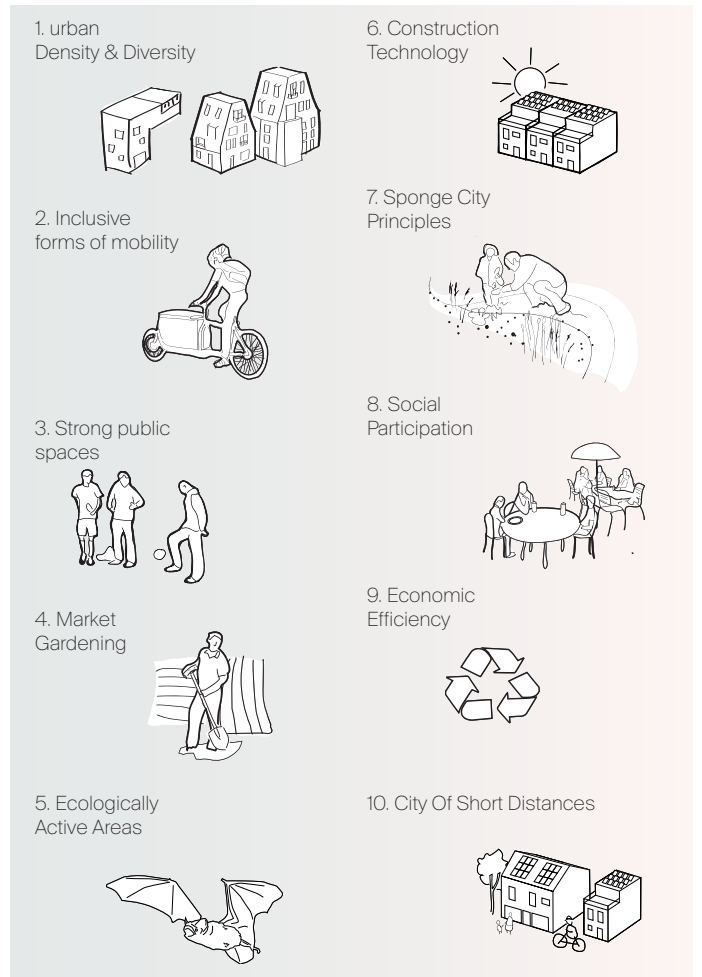
WOLFSBURG FUHRENKAMP

assignment Development of an ecologically sustainable, mixed-use neighborhood as city extension **location** Wolfsburg **size** 538.626m² **client** City of Wolfsburg **services** holistic framework concept, in-depth urban planning and design principles for the existing building fabric **status** completed, 2022 **team** Oliver Seidel, Lena lauermann, Lydia Oehlwein, Jacob Fielers, Jakob Bohlen, Ricarda Roloff **cooperation** freiwurf LA

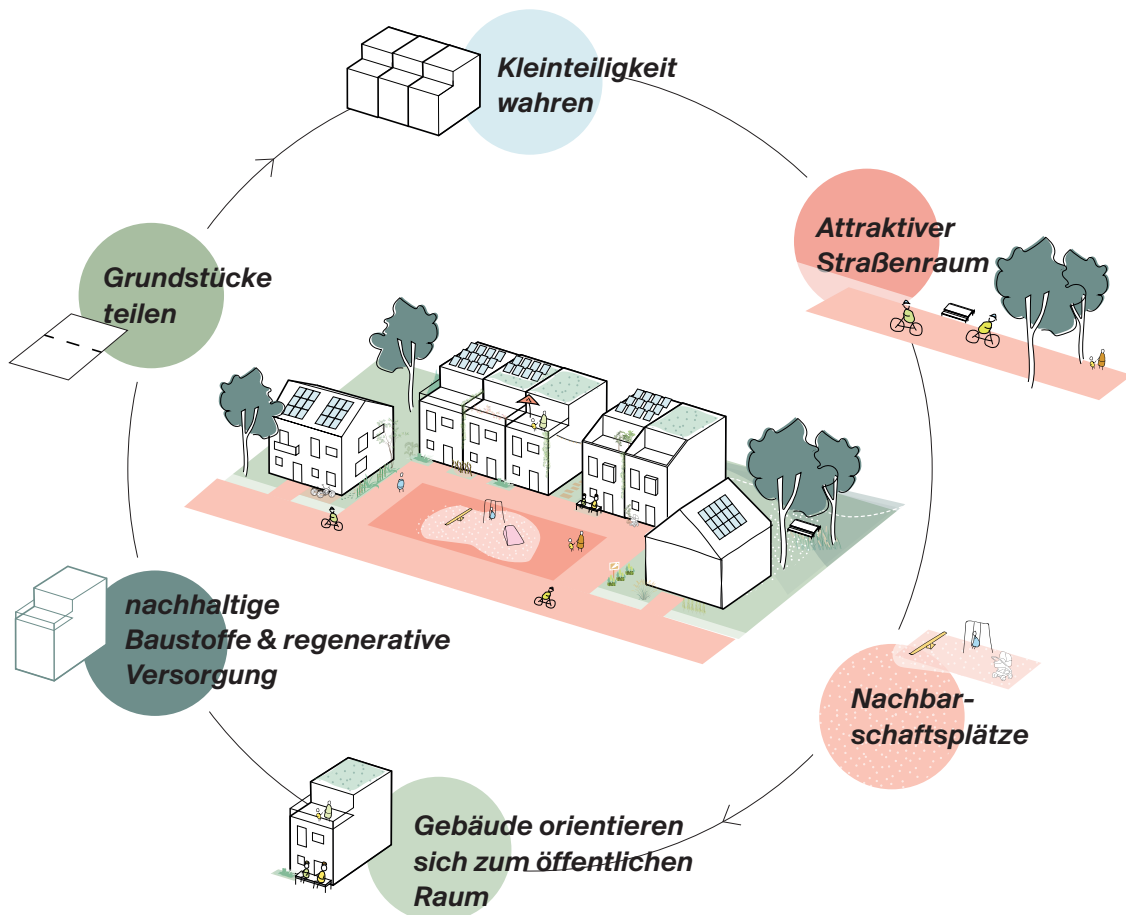
The neighborhood at Fuhrenkamp takes on the responsibility of a climate-friendly settlement. The compact development minimizes the degree of sealing and creates generous green spaces with dense tree populations. These air-condition the neighborhood and increase biodiversity. Stormwater management functions according to a sponge city and cascade principles, in which rainwater is retained and temporarily stored, evaporates and infiltrates or is discharged into local ditches. Renewable energy is generated locally.

The use of durable materials, building with used and recycled materials, and a wood construction method contribute to climate protection. Promoting and enabling a change in mobility behavior achieves a low-car neighborhood. The climate quarter creates a social mix by offering diverse, also new forms of housing as well as friendly street spaces for play and circulation, diverse open spaces and neighborhood centers for all generations.

The Fuhrenkamp neighborhood is being developed in phases, beginning in the south and growing out of the city. The development in individual steps makes it possible to learn from what already exists and to make appropriate adjustments to meet changing needs. The edges of the individual neighborhoods in the area react in a differentiated manner to their context: the neighborhoods leave sufficient distance to the section of forest to the west. At the same time, the biotope network is strengthened and expanded in a vertical direction between the existing structures and the new neighborhoods to the east. The new district is holistically interconnected through a framework of neighborhood centers.



10 key design themes ensure a climate-active and livable neighborhood





Living by the river, close to nature and relaxing



Living on the square, the social meeting point in the quarter, with communal ground floor zones



Structural concept - compact development - spacious green spaces