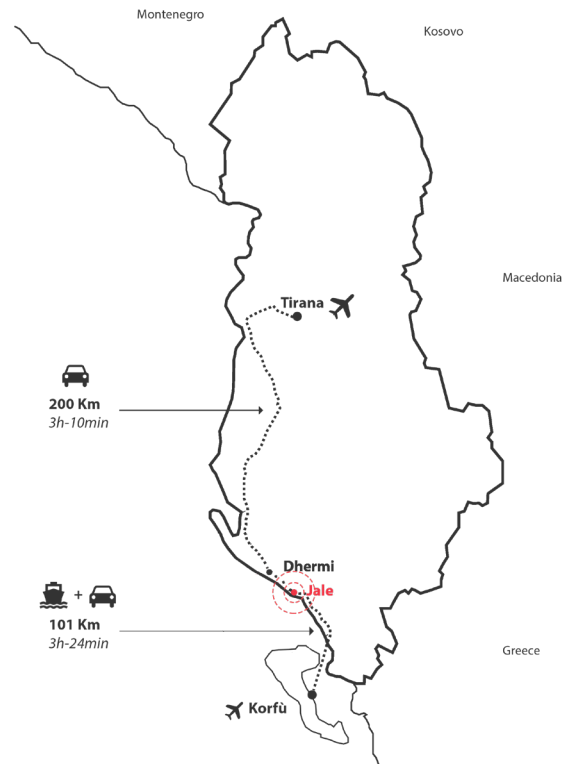


## Jale Waterfront

**international competition** Urban requalification of Jale waterfront **location** Himarë, Albania **size** 23,1 ha **client** Albanian Development Fund, Himarë Municipality **services** masterplan, urban design **status** in progress **partners** Martin Sobota **team** Francisco Monforte **cooperation** Boom Landscape

The rural south of Albania is gifted with a spectacular coastline, unspoiled natural areas and rich cultural heritage. Travel is an important driver of the economic development of Albania. However, developments of the past 20 years have been haphazard and do not match the touristic potential of the region. Being part of the Albanian Governments initiative of 'Urban Rebirth', the main objective of this project was the regeneration of the waterfronts of the villages Jalë and Dhërmi. Starting from the outstanding natural beauty of both locations, our aim was to structure and strengthen the coastline and connect it with its surroundings, both physically as well as ideally. In Jale this included freeing the main promenade from car traffic, providing basic infrastructure such as benches, bins, showers and fountains, but keeping the promenade at a low profile, seeking a continuation with the beach. As the beach is very deep and the bay mainly attracts the younger generations, we have been inspired by some of the existing beach-bars that were embedded in rich flowering gardens. Between the beach and the promenade we have provided a strip of gardens housing 6-7 beach-bars, each with a stable structure to survive the harsh storms in winter. The bars come in three different sizes and allow for all furniture to be stored inside during the cold season.

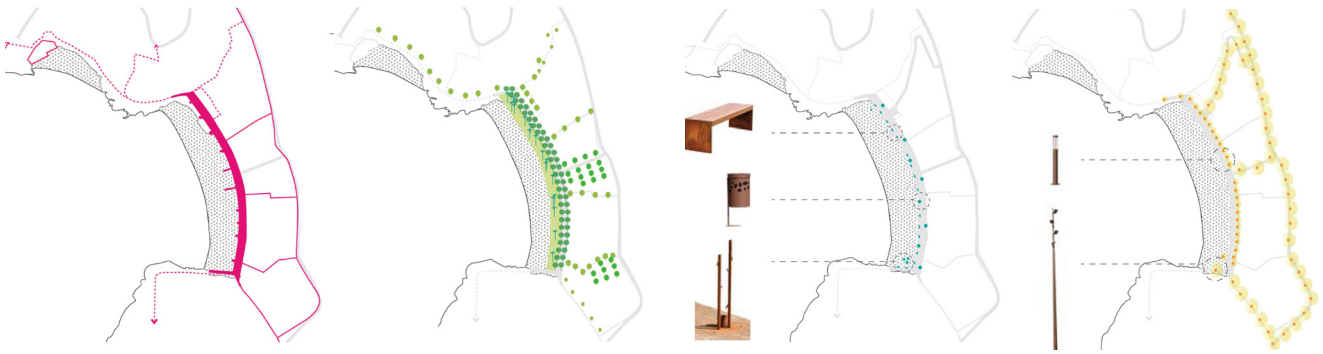


site location



render beach

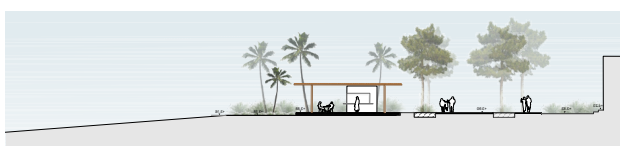




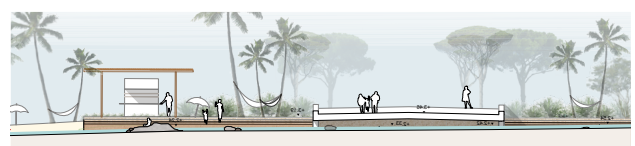
circulation/tree structure/furniture/lightning diagrams



masterplan



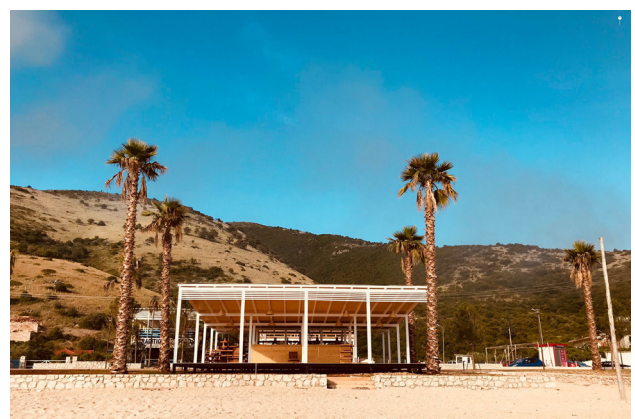
top view/sectionpromenade



top view/sectionpromenade



render promenade



aerial photo