

GREAT ZIMBABWE

VISITOR CENTER AND REHABILITATION OF THE VISITORS FACILITIES

assignment design of the visitors facilities at Great Zimbabwe UNESCO World Heritage Site **location** Masvingo, Zimbabwe **size** visitor center: 1290 m², national park: 800 ha **client** UNDP **services** Architectural concept, spatial analysis, landscape design **status** in construction **team** Martin Sobota, Edoardo Facinelli, Ivan Shkurko, Philipp Holzer

Set at the threshold of a World Heritage landscape, the interpretation centre is conceived as a quiet, breathable architecture that amplifies the site's monumental atmosphere.

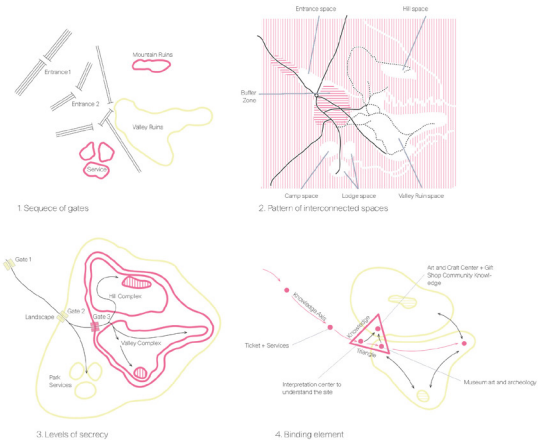
Earthy materials - rammed earth walls, polished concrete floors, teak detailing, and corten steel signage - create tactile continuity with the ancient ruins, while slender steel columns and a floating roof plane open the interiors to light, wind, and landscape. Passive design strategies, including cross ventilation, deep overhangs, shaded courtyards, a planted green roof, rainwater harvesting, and solar canopies, significantly reduce energy demand and water consumption. Shallow foundations and careful siting safeguard sensitive archaeology.

Crafted with local labor and low embodied carbon techniques, the building honors the cultural and spiritual significance of this extraordinary area, offering a sustainable, reverent setting that deepens visitor understanding while preserving a heritage landscape of profound historical importance.

It stands as a bridge between past and future for generations to come across time enduringly.



Great Zimbabwe Hill complex



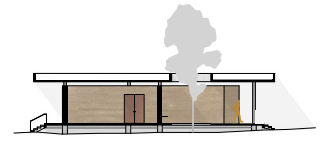
Spatial Concept



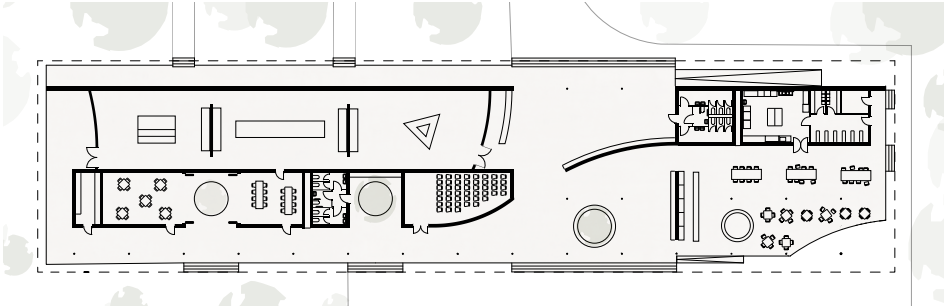
Aerial visualization



Front facade



Section



Plan



interior visualization



Visitor center front entrance visualization